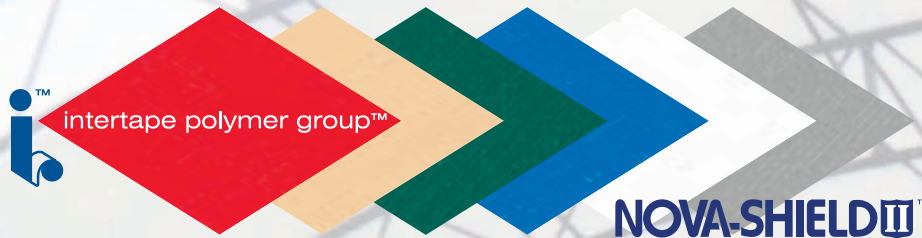


Strength and durability of our covers comes from a weave of double stacked, high-density polyolefin slit tapes. They are backed with a standard 10 year pro-rated warranty or an optional 15 year pro-rated warranty. Finish your **Diamond Shelter** using one or more of these appealing colours.



Optional **Powder Coating** provides a superior finish that is tough, durable, attractive and environmentally friendly.

Powder Coating comes in many colours for a distinctive finish.



- ◆ At **Diamond Shelters** quality is a tradition
- ◆ We have been manufacturing shelters since 1989
- ◆ Available in widths from 15' to 160'
- ◆ Technical support is available from our sales and engineering staff
- ◆ Certified by Canadian Welding Bureau, your assurance of first class workmanship
- ◆ Made in Canada

Diamond Shelters



Canadian Toll Free 1-888-240-5066
USA Toll Free 1-888-204-2102
Email: info@diamondshelters.net

Diamond Shelters

90' to 160' Wide Welded Truss Shelters



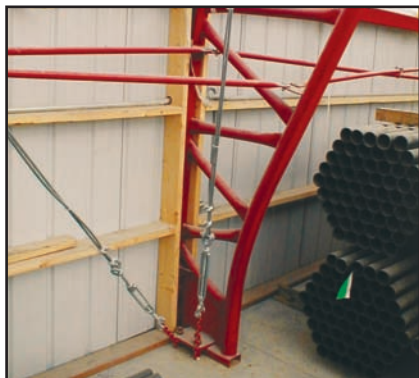
*Innovative Structures from a Company
Committed to Manufacturing Excellence!*



Diamond Shelters are leaders in finding new and creative applications for commercial and industrial sectors. Welded Truss rafter systems in **Diamond Shelters** produce a wide open space, valued in warehousing and manufacturing design.

This 110' x 120' **Diamond Shelter** serves not only as a warehouse, but also has a large heated packaging area built inside. One double sliding door, four overhead doors (one with a loading dock) and three man doors provide quick and easy access to warehouse from any direction.

Diamond Shelters



All **Diamond Shelter** frames are constructed of hollow structural tube with yield and tensile strengths that allow them to withstand heavier stress loads. All frames are engineered to meet requirements of the National Building Code.



90' to 160' wide **Diamond Shelters** are well suited for large operations in agricultural industry. Whether they are for machinery storage, dairy barns or riding arenas, **Diamond Shelters** offer an affordable long lasting alternative to conventional buildings.

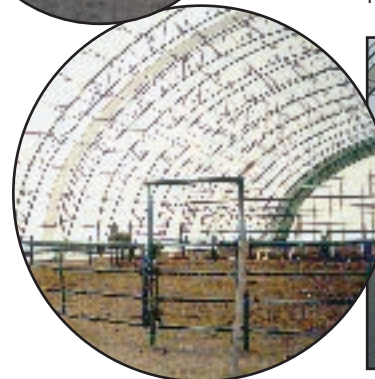
This 90' x 204' **Diamond Shelter** will be used as a horse training facility. What could *you* put into it?



Diamond Shelters



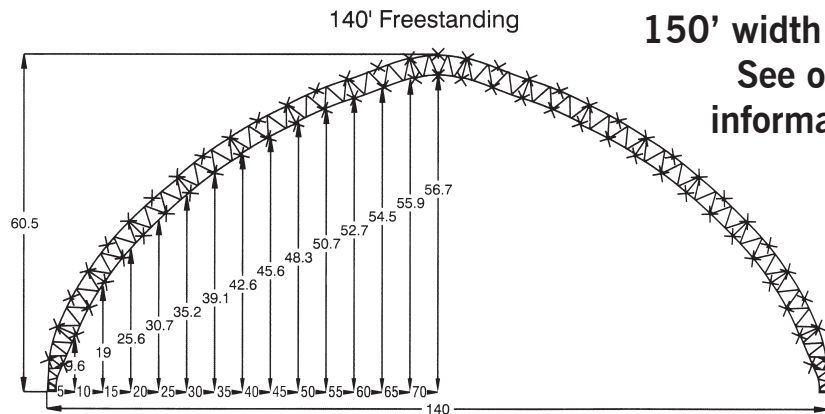
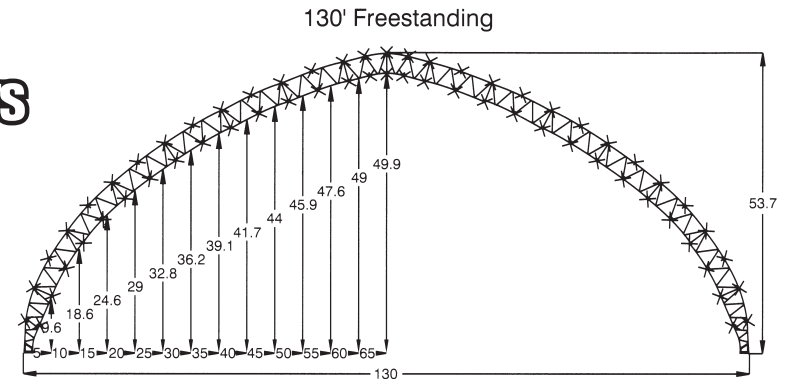
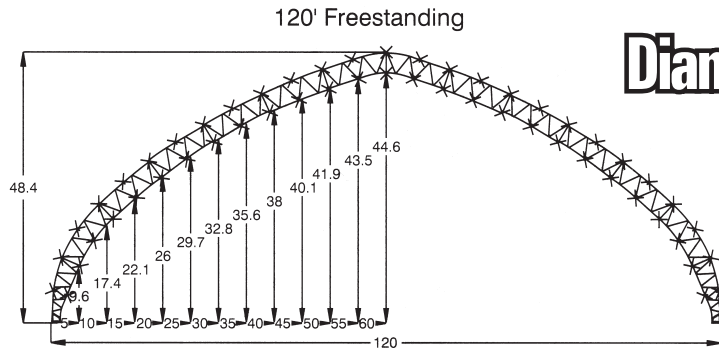
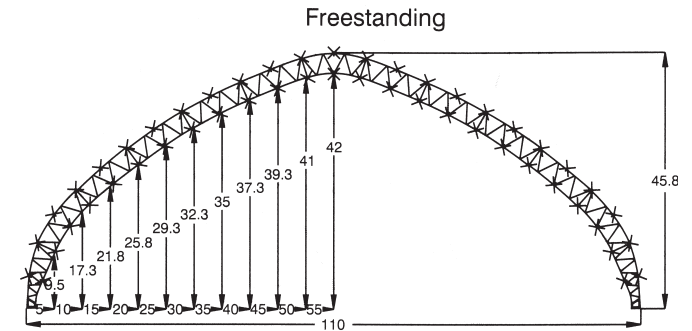
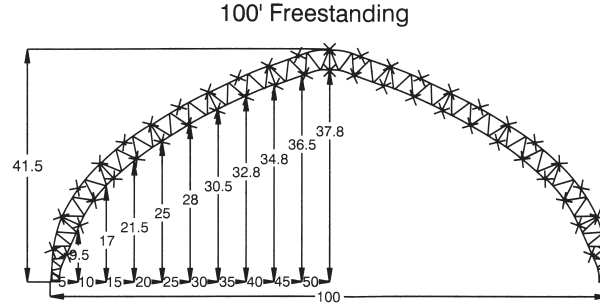
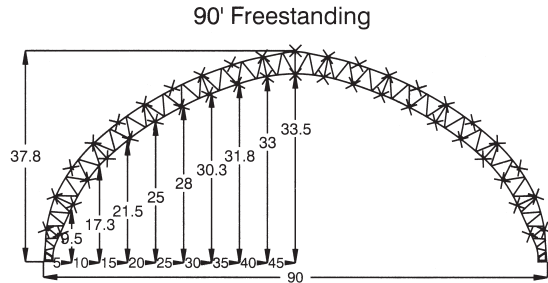
Diamond Shelter covers allow an abundance of natural light to penetrate into the shelter, a major attraction for riding arenas.



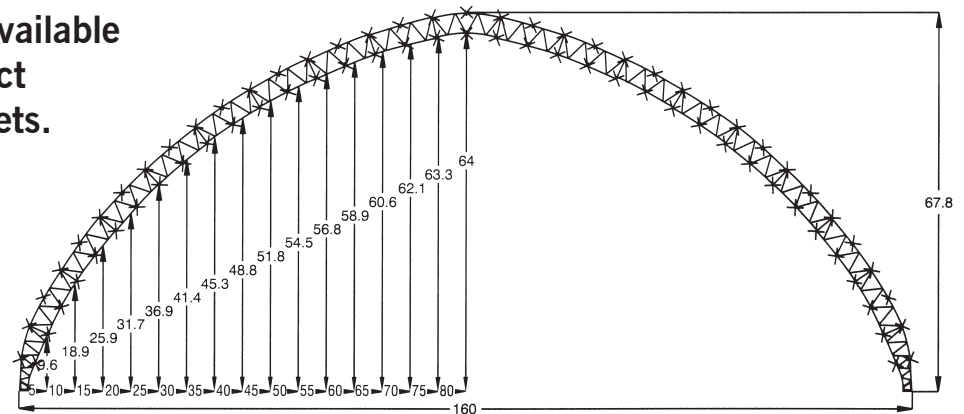
90' to 160' WELDED TRUSS MODELS

Freestanding **Diamond Shelters** can be built to the length that best suits your needs.

All specifications subject to change without notice.



150' width is also available
See our product
information sheets.





◀ A major furniture manufacturer needed an area to store wood prior to processing. They chose a 110' x 108' **Diamond Shelter** and put it on top of a 12' concrete wall.



A variety of foundations have been used with **Diamond Shelters**. Make sure the foundation you choose is properly engineered and meets all building code requirements.



The 90' to 160' wide series of **Diamond Shelters** have welded truss end frame poles. Such a design is necessary to withstand higher wind loads.



Our own polyethylene covered end wall provides a durable and attractive finish. End walls for **Diamond Shelters** can also be clad with wood or metal.

Diamond Shelters



Welded truss **Diamond Shelters** have optional 8', 10' or 12' rafter spacing. Spacing required will depend upon building application and snow load specifications for your specific area.



All rafters and cross bracing have easy to assemble, bolt together joints.

All **Diamond Shelter** covers are top quality, North American made 12.5 oz. polyethylene fabric. D-rings are spaced every 18" and have double reinforced gussets.

Our "Pipe and Loop" tie down system for main cover is standard on all 90' to 160' wide **Diamond Shelters**.



Diamond Shelters



▶ A tarp manufacturer chose a 90' x 180' **Diamond Shelter** and finished it off with beautiful landscaping.